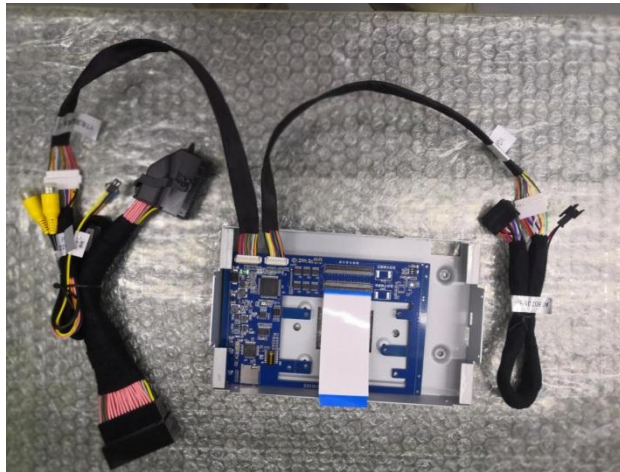


User Manual

OEM RADIO:Camera Interface for FORD SYNC 2 system with 7" OEM monitor



Model name	PAS-FD-SYNC2
Released Date	2020-03-18
Manual Version	V1.3
Language	English



1. Car Compatibility

Car Models	Production Year
New Edge	-2016
kuga	-2016
Focus	-2016



Contents

1.Features	4
2.Specifications.....	5
3.Packing Lists.....	6
4.Wiring Diagram	7
5.DIP Switch Settings	8
6.Operation Instructions	11
7.Safety Considerations	17



1. Features:

A. IPAS+ 2 Video in

B. Support Intelligent parking assist system(selected models)

C. Reverse camera auto trigger

D. 1 video in for rear camera, another for 360 view or DVR/front view(need factory radio botton to switch it)

Optional:

360 Panoramic,etc



2. Specifications

1. Interface I/O Spec:

Input: CVBS *2 (Rear View Camera, 360, Front View Camer), VGA *1 (Specific 360 Panoramic System)

Output: FPC

2. Power Spec:

Input Power: 9V-16V

Consumption: 6W

3. Package Content:

Interface Unit * 1

Main Power Cable * 1

FPC * 1



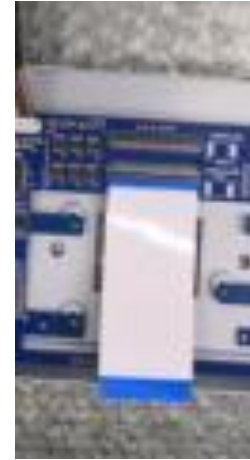
3. Packing Lists



Camera Interface



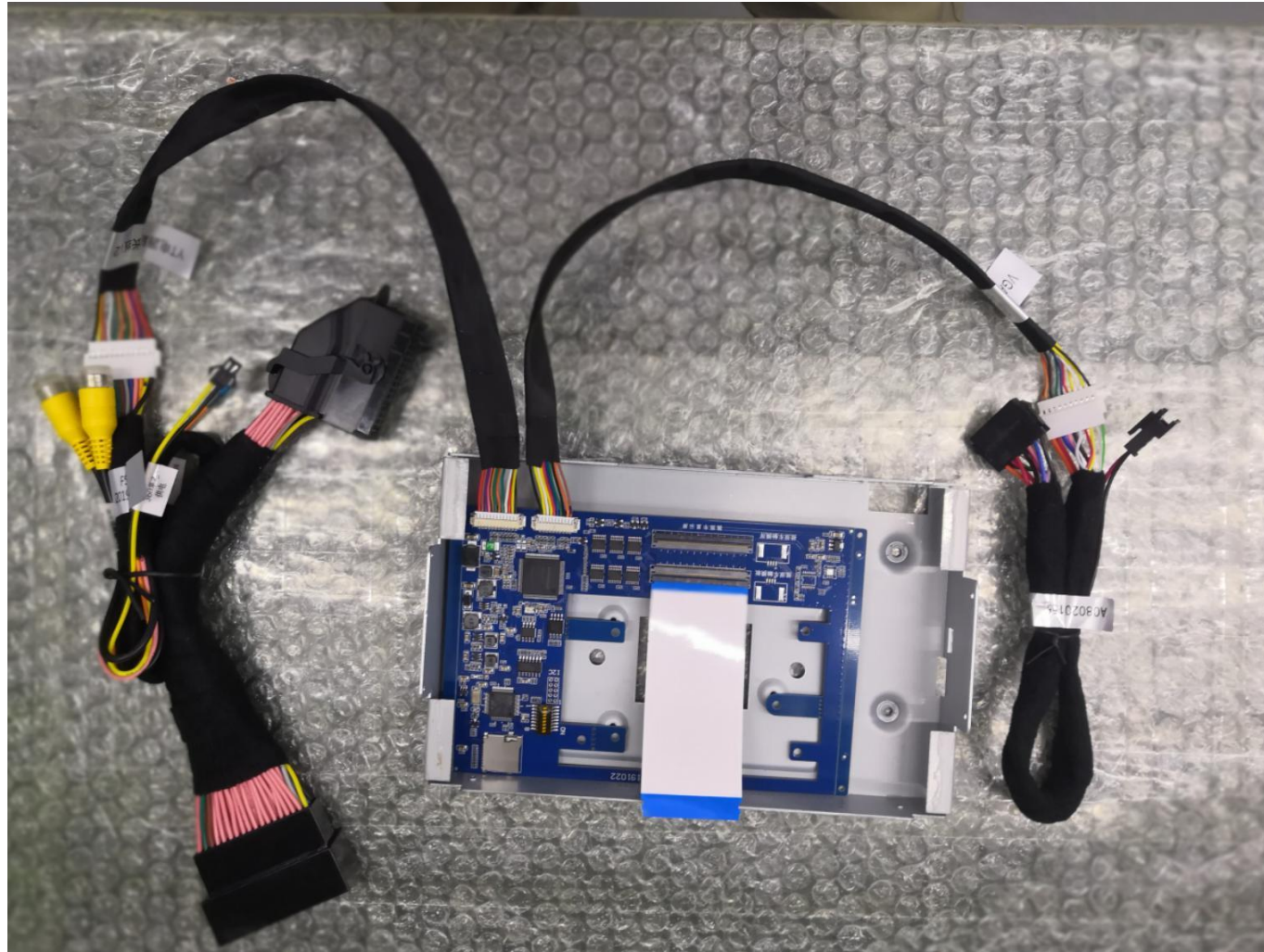
Power Harness



FPC



4. Wiring Diagram



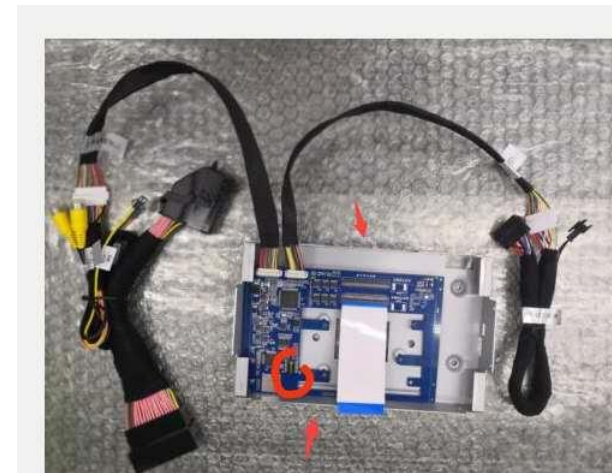
5. DIP Switch Settings



ON (▼) OFF(▲)

Car Model	No.1	No.2	No.3
Kuga/Focus	OFF(▲)	OFF(▲)	OFF(▲)
New Edge	ON (▼)	OFF(▲)	OFF(▲)

PIN	ON (▼)	OFF(▲)
4	Turn off PDC	Turn on PDC
5	Turn off dynamic guideline	Turn on dynamic guideline
6	Turn on DVR	Turn off DVR
7	VGA 360	



*Please note that DIP Switch 5 and 8 put **ON (▼)** for OEM rear view.

*** Dip Switcher Settings II (Quick Setting) :**

Mode selection	No.4	No.5	No.6	No.7	No.8
AV.360 (Canbus reverse not working)	OFF(▲)	OFF(▲)	OFF(▲)	OFF(▲)	ON (▼)

6. Operation Instructions

6.1 Installation Process

* Please note that power off the car and take protection measures to avoid damaging in the installation.

1. Focus(SYNC2) central control map (Figure 1).
2. First remove the top frame on the screen of the original car with tools (Figure 2).
3. Remove the screws with a screwdriver and take out the screen and the radio of the original car (Figure 3).



1



2



3

4. Remove the four screws with a screwdriver at the back of the screen. Replace the rear cover of the screen with the one provided in the set of Interface(Figure 4).
5. Same as step 4 to remove the four screws at the side of the display with a screwdriver (Figure 5), unscrew the three screws on the original screen board (Figure 6).



Figure 4



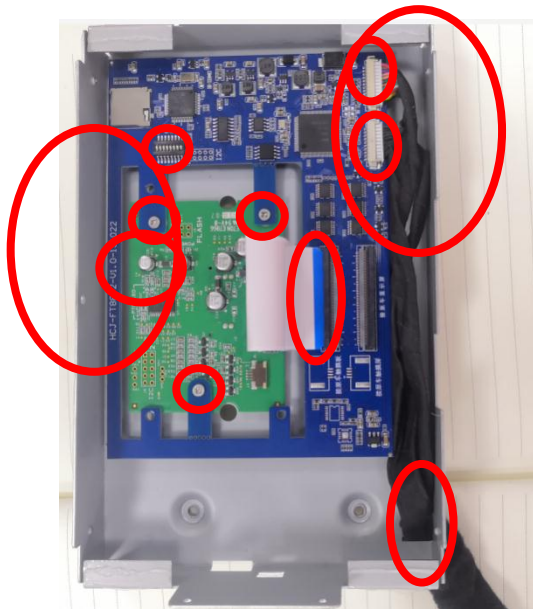
Figure 5



Figure 6

6. Install the three screw holes of the interface with the original screen board to fix the original screen board.

7. Set the dip switch before recover the radio. Transfer the power harness as below:



* Long press MENU button on the steering wheel for 2 seconds to enter the DVR/front view.



7. Safety Considerations

- 1. In order to protect driving safety and avoid breaking the traffic law, please do not watch the program or use this product when you're driving.**
- 2. Please do not put the product in the damp environment or water, in order to avoid electric shock, damaged and fire accident caused by short circuit.**
- 3. The reversing surveillance function just be used in reversing assistance. Once happened reversing accident does not concern us. And hint of fault message need to be confirmed by professional maintenance Center.**
- 4. In order to safety and ensure the use of product, the installation please leave it to the professional. Do not unload by yourself in order to avoid causing damaged or accident.**
- 5. Start the engine before loading, check the interface whether have function displayed, key control whether correct, the vehicle interface whether have scratch. Please give the feedback to customers if there has any questions.**
- 6. Please note that put the disassemble automotive components in a good way on the installation process, avoid scratching the instrument panel, the leftovers of connect cables need to handle and do not leave it in the car. The connecting plug must be insulated in order to short circuit.**

-
- 7. The cables should be connected in a good way, the vehicle installation space is small, so reduce space usage as far as possible, and it will easy installation for monitor. There should be a good plan about connect cables, avoid affecting the active component of connecting, such as control components of turning steering wheel, throttle and brake pedal. There need to be fasten after connecting cables in case of drop.**
- 8. Please do not plug or pull the connected cables in the state of power-on, in order to avoid damaging monitor or accessory.**



Copyright © Cartizan. All rights reserved.