


**THE NETHERLANDS  
(N E D E R L A N D)****COMMUNICATION**Concerning <sup>(1)</sup>:

- approval granted
- ~~approval extended~~
- ~~approval refused~~
- ~~approval withdrawn~~
- ~~production definitely discontinued~~

of a type of device pursuant to Regulation number 7.

**Approval number: E4-7R-0224274****Extension number: 00**

1. Trade name or mark of the device : 
2. Manufacturer's name for the type of device : DF-TRS008
3. Manufacturer's name and address : Zhejiang Dahao Automotive Co., Ltd.  
Xiaotian Village, Duqiao Town, Linhai City,  
Taizhou City, Zhejiang Province, P.R. China  
317000
4. If applicable, name and address of the manufacturer's representative : Not applicable
5. Submitted for approval on : 19 June 2015
6. Technical service responsible for conducting approval tests : TÜV SÜD Auto Service GmbH  
Westendstraße 199  
D-80686 München
7. Date of report issued by that service : 1 July 2015
8. Number of report issued by that service : 15-00442-CX-SHA-00



9. Concise description
- 9.1. By category of lamp : Rear position lamp R1 and stop lamp S1
- For mounting either outside or inside or both <sup>(1)</sup> : Outside
- Colour of light emitted : red/~~white~~ <sup>(1)</sup>
- Number, category and kind of light source(s) : Rear position lamp: 17\*LED;  
Stop lamp: 6\*LED
- Voltage and wattage : Rear position lamp: 12V/24V and 2.2W;  
Stop lamp: 12V/24V and 1W
- Light source module specific identification code : Not applicable
- Only for limited mounting height of equal to or less than 750 mm above the ground : ~~yes~~/no <sup>(1)</sup>
- Geometrical conditions of installation and relating variations, if any : See manufacturer's information document
- Application of an electronic light source control gear/variable intensity control:
- (a) Being part of the lamp : ~~yes~~/no <sup>(1)</sup>
- (b) Being not part of the lamp : ~~yes~~/no <sup>(1)</sup>
- Input voltage(s) supplied by an electronic light source control gear/variable intensity control : Not applicable
- Electronic light source control gear/variable intensity control manufacturer and identification number (when the light source control gear is part of the lamp but is not included into the lamp body) : Not applicable
- Variable luminous intensity : ~~yes~~/no <sup>(1)</sup>
- 9.2. Function(s) produced by an interdependent lamp forming part of an interdependent lamp system:
- Front position lamp : ~~yes~~/no <sup>(1)</sup>
- R1 Rear position lamp : ~~yes~~/no <sup>(1)</sup>
- R2 Rear position lamp : ~~yes~~/no <sup>(1)</sup>
- S1 Stop lamp : ~~yes~~/no <sup>(1)</sup>
- S2 Stop lamp : ~~yes~~/no <sup>(1)</sup>
- S3 Stop lamp : ~~yes~~/no <sup>(1)</sup>
- S4 Stop lamp : ~~yes~~/no <sup>(1)</sup>
- End-outline marker lamp : ~~yes~~/no <sup>(1)</sup>
10. Position of the approval mark : On the lens



11. Reason(s) for extension (if applicable) : Not applicable
12. Approval : granted/~~extended/refused/withdrawn~~<sup>(1)</sup>
13. Place : Zoetermeer
14. Date : 28-JUL-2015
15. Signature :

  
Uwe Löbig



16. The list of documents deposited with the Administrative Service which has granted approval, is annexed to this communication and may be obtained on request.  
- Information document: DF-TRS008-00, 3 pages dated 19 June 2015

---

<sup>(1)</sup> Strike out what does not apply.



Technical Report No.: 15-00442-CX-SHA-00  
Manufacturer: Zhejiang Dahao Automotive Co., Ltd.  
Type: DF-TRS008

## TECHNICAL REPORT

**No.: 15-00442-CX-SHA-00**

Test according to ECE regulation relating to

Rear position lamp and stop lamp


**ECE Regulation No. 7**

Supplement 23 to the 02 series of amendments

Approvals granted up to now		
ECE	Number of approval	Date
	---	---



## I. Technical description

- 0.1. Make (trade name of manufacturer) : 
- 0.2. Type : DF-TRS008
- 0.2.1. Variants : N/A
- 0.3. Means of identification of type : By digits and letters
- 0.4. Location of the trade mark : On the lens
- 0.5. By category of lamp : Rear position lamp and stop lamp
- For mounting either outside or inside or both : Outside
- Color of light emitted : Red
- Number, category and kind of light source(s) : Rear position lamp: 17\*LED;  
Stop lamp: 6\*LED
- Voltage and wattage : Rear position lamp: 12V/24V and 2.2W;  
Stop lamp: 12V/24V and 1W
- Light source module specific identification code : N/A
- Only for limited mounting height of equal to or less than 750 mm above the ground : No
- Geometrical conditions of installation and relating variations, if any : See manufacturer's information document
- Application of an electronic light source control gear/variable intensity control  
Being part of the lamp : No  
Being not part of the lamp : No
- Input voltage(s) supplied by an electronic light source control gear/variable intensity control : N/A

Technical Report No.: 15-00442-CX-SHA-00  
Manufacturer: Zhejiang Dahao Automotive Co., Ltd.  
Type: DF-TRS008

Page 3 / 9

Electronic light source control gear/  
variable intensity control manufacturer  
and identification number : N/A

Variable luminous intensity : No

0.6. Name and address of manufacturer : Zhejiang Dahao Automotive Co., Ltd.  
Xiaotian Village, Duqiao Town, Linhai  
City, Taizhou City, Zhejiang Province,  
P.R. China 317000

0.8. Name and address of assembly plant : See 0.6.

0.9. Location of the approval mark : On the lens

0.10. If applicable, name and address of the  
manufacturer's representative : N/A

## II. Test record

### 1. Test conditions

1.1. Technical data of the test samples : Two samples are tested.  
For information about the form of the  
lamp, the position of the reference point  
and the reference axis, see information  
document.

1.2. Test procedures used : According to ECE Regulation No.: 7.02.

1.3. Measuring and test equipment : The above equipments on which the tests  
were carried out fulfilled the requirements  
of ECE Regulation No.: 7.02.

1.4. Standard bulb : N/A

Luminous flux : N/A

### 2. Test results

#### 2.1. General Specifications

The devices have been designed and constructed that in normal conditions of use,  
and notwithstanding the vibrations to which they may be subjected in such use, their  
satisfactory operation remains assured and they retain the characteristics prescribed  
by this regulation.

No light source module or light generator is used.

## 2.2. Intensity of light emitted

### 2.2.1. Rear position lamp, sample No. 1, test voltage 13.499V, at HV after 1 minute of operation.

No.	Point of the measurement		Limits [cd]		Measured values [cd]
			Minimum	Maximum	
1	H	V	4.00	17.00	6.03

#### 2.2.1.1. Sample No. 1, test voltage 13.499V, after 30 minutes of operation.

No.	Point of the measurement		Limits [cd]		Measured values [cd]	
			Minimum	Maximum		
1	5L	10U	0.80	17.00	5.22	
2	5R	10U	0.80	17.00	5.30	
3	20R	5U	0.40	17.00	5.03	
4	10R	5U	0.80	17.00	5.36	
5	H	5U	2.80	17.00	5.44	
6	10L	5U	0.80	17.00	5.20	
7	20L	5U	0.40	17.00	4.78	
8	10L	V	1.40	17.00	5.28	
9	5L	V	3.60	17.00	5.44	
10	H	V	4.00	17.00	5.52	
11	5R	V	3.60	17.00	5.54	
12	10R	V	1.40	17.00	5.42	
13	20R	5D	0.40	17.00	5.09	
14	10R	5D	0.80	17.00	5.42	
15	H	5D	2.80	17.00	5.47	
16	10L	5D	0.80	17.00	5.25	
17	20L	5D	0.40	17.00	4.81	
18	5L	10D	0.80	17.00	5.29	
19	5R	10D	0.80	17.00	5.38	
20	All directions defined by Annex 1		0.05	17.00	Min. 0.13	Max. 5.97

#### 2.2.1.2. Sample No. 1, intensity of light emitted (LED) after 1 minute

-by calculation

The luminous intensity distribution after 1 minute of operation complies with the minimum and maximum requirements.



2.2.2. Rear position lamp, sample No. 2, test voltage 27.999V, at HV after 1 minute of operation.

No.	Point of the measurement		Limits [cd]		Measured values [cd]
			Minimum	Maximum	
1	H	V	4.00	17.00	5.41

2.2.2.1. Sample No. 2, test voltage 27.999V, after 30 minutes of operation.

No.	Point of the measurement		Limits [cd]		Measured values [cd]	
			Minimum	Maximum		
1	5L	10U	0.80	17.00	4.68	
2	5R	10U	0.80	17.00	4.74	
3	20R	5U	0.40	17.00	4.46	
4	10R	5U	0.80	17.00	4.74	
5	H	5U	2.80	17.00	4.80	
6	10L	5U	0.80	17.00	4.63	
7	20L	5U	0.40	17.00	4.27	
8	10L	V	1.40	17.00	4.65	
9	5L	V	3.60	17.00	4.76	
10	H	V	4.00	17.00	4.81	
11	5R	V	3.60	17.00	4.81	
12	10R	V	1.40	17.00	4.74	
13	20R	5D	0.40	17.00	4.42	
14	10R	5D	0.80	17.00	4.69	
15	H	5D	2.80	17.00	4.78	
16	10L	5D	0.80	17.00	4.63	
17	20L	5D	0.40	17.00	4.26	
18	5L	10D	0.80	17.00	4.64	
19	5R	10D	0.80	17.00	4.68	
20	All directions defined by Annex 1		0.05	17.00	Min. 0.28	Max. 5.10

2.2.2.2. Sample No. 2, intensity of light emitted (LED) after 1 minute  
 -by calculation

The luminous intensity distribution after 1 minute of operation complies with the minimum and maximum requirements.



2.2.3. Stop lamp, sample No. 1, test voltage 13.499V, at HV after 1 minute of operation.

No.	Point of the measurement		Limits [cd]		Measured values [cd]
			Minimum	Maximum	
1	H	V	60.00	260.00	88.72

2.2.3.1. Sample No. 1, test voltage 13.499V, after 30 minutes of operation.

No.	Point of the measurement		Limits [cd]		Measured values [cd]	
			Minimum	Maximum		
1	5L	10U	12.00	260.00	38.74	
2	5R	10U	12.00	260.00	45.15	
3	20R	5U	6.00	260.00	11.31	
4	10R	5U	12.00	260.00	48.30	
5	H	5U	42.00	260.00	80.55	
6	10L	5U	12.00	260.00	32.83	
7	20L	5U	6.00	260.00	9.71	
8	10L	V	21.00	260.00	42.00	
9	5L	V	54.00	260.00	77.65	
10	H	V	60.00	260.00	86.72	
11	5R	V	54.00	260.00	86.45	
12	10R	V	21.00	260.00	57.72	
13	20R	5D	6.00	260.00	11.55	
14	10R	5D	12.00	260.00	52.96	
15	H	5D	42.00	260.00	89.03	
16	10L	5D	12.00	260.00	35.53	
17	20L	5D	6.00	260.00	9.71	
18	5L	10D	12.00	260.00	48.96	
19	5R	10D	12.00	260.00	57.17	
20	All directions defined by Annex 1		0.30	260.00	Min. 2.96	Max. 90.40

2.2.3.2. Sample No. 1, intensity of light emitted (LED) after 1 minute

-by calculation

The luminous intensity distribution after 1 minute of operation complies with the minimum and maximum requirements.

2.2.4. Stop lamp, sample No. 2, test voltage 27.999V, at HV after 1 minute of operation.

No.	Point of the measurement		Limits [cd]		Measured values [cd]
			Minimum	Maximum	
1	H	V	60.00	260.00	86.56

2.2.4.1. Sample No. 2, test voltage 27.999V, after 30 minutes of operation.

No.	Point of the measurement		Limits [cd]		Measured values [cd]	
			Minimum	Maximum		
1	5L	10U	12.00	260.00	41.33	
2	5R	10U	12.00	260.00	49.50	
3	20R	5U	6.00	260.00	11.96	
4	10R	5U	12.00	260.00	49.23	
5	H	5U	42.00	260.00	75.02	
6	10L	5U	12.00	260.00	29.94	
7	20L	5U	6.00	260.00	11.69	
8	10L	V	21.00	260.00	33.37	
9	5L	V	54.00	260.00	66.12	
10	H	V	60.00	260.00	83.52	
11	5R	V	54.00	260.00	75.72	
12	10R	V	21.00	260.00	51.13	
13	20R	5D	6.00	260.00	13.04	
14	10R	5D	12.00	260.00	34.48	
15	H	5D	42.00	260.00	63.83	
16	10L	5D	12.00	260.00	26.51	
17	20L	5D	6.00	260.00	10.02	
18	5L	10D	12.00	260.00	27.95	
19	5R	10D	12.00	260.00	29.77	
20	All directions defined by Annex 1		0.30	260.00	Min. 1.85	Max. 84.24

2.2.4.2. Sample No. 2, intensity of light emitted (LED) after 1 minute

-by calculation

The luminous intensity distribution after 1 minute of operation complies with the minimum and maximum requirements.

2.3. Colour

2.3.1. Rear position lamp - Red

Sample	Measured values		Limits	
	x	y	$y \leq 0.335$	$y \geq 0.980-x$
No. 1	0.6656	0.3191	Yes	Yes
No. 2	0.6677	0.3184	Yes	Yes

2.3.2. Stop lamp - Red

Sample	Measured values		Limits	
	x	y	$y \leq 0.335$	$y \geq 0.980-x$
No. 1	0.6962	0.3024	Yes	Yes
No. 2	0.6948	0.3017	Yes	Yes

2.4. Apparent surface

2.4.1. Rear position lamp

Upper boundary "U"(mm)	Down boundary "D"(mm)	Inner boundary "I"(mm)	Outer boundary "O"(mm)
61	61	61	61

2.4.1. Stop lamp

Upper boundary "U"(mm)	Down boundary "D"(mm)	Inner boundary "I"(mm)	Outer boundary "O"(mm)
38	38	30	30

3. Specimen submitted to test on: 19.06.2015 (DD.MM.YYYY)

4. Place of test: Jiangsu Huacheng Vehicle Inspection Co.,  
 Ltd., Zhenjiang City, P.R. China

Date of test: 24.06.2015 (DD.MM.YYYY)





Technical Report No.: 15-00442-CX-SHA-00  
 Manufacturer: Zhejiang Dahao Automotive Co., Ltd.  
 Type: DF-TRS008

**III. Enclosures**

Manufacturer's information docu-

ment No.: DF-TRS008-00

Dated on: 19.06.2015 (DD.MM.YYYY)

**IV. Statement of conformity**

The information folder as mentioned under No. III and the type described therein are in compliance with the test specification mentioned above. The worst-case was selected in accordance with document "Preparation of Test Reports".

The test report may be reproduced and published in full and by the client only. It can be reproduced partially with the written permission of the test laboratory only.

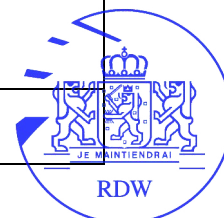
München, 01.07.2015  
 (DD.MM.YYYY)



Gu, Qing

Test Laboratory / DIN EN ISO 17025

Genehmigungsbehörde / Approval authority	Land/Country	Registriernummer/ Registration-number	Aktueller Benennungsumfang/ Actual scope list
Kraftfahrt-Bundesamt (KBA)	Deutschland/ Germany	KBA-P 00100-10	www.kba.de
Vehicle Certification Agency (VCA)	Vereintes Königreich/ United Kingdom	VCA-TS-006	http://ec.europa.eu/enterprise/sectors/automotive/approval-authorities-technical-services/technical-services/index_en.htm
Approval Authority of the Netherlands (RDW)	Niederlande/ The Netherlands	RDWT-082-01	
National Standards Authority of Ireland (NSAI)	Irland/ Ireland	Technical Service Number: 49	
Vehicle Safety Certification Center (VSCC)	Taiwan/ Taiwan	DE04-06-2	<a href="http://www.vsc.org.tw/English/Default.aspx">http://www.vsc.org.tw/English/Default.aspx</a>




Zhejiang Dahao Automotive Co., Ltd.  
Xiaotian Village, Duqiao Town, Linhai City,  
Taizhou City, Zhejiang Province, P.R. China 317000

June 19, 2015

Dear Sirs,

We would like to apply for the type approval according to ECE.

Function	ECE approval number
Rear direction indicator lamp	E4-6R-0124274
Stop lamp	E4-7R-0224274
Rear position lamp	E4-7R-0224274

Trade name or mark	:	
Manufacturer's name for type of device	:	DF-TRS008
Name and address of manufacturer	:	Zhejiang Dahao Automotive Co., Ltd. Xiaotian Village, Duqiao Town, Linhai City, Taizhou City, Zhejiang Province, P.R. China 317000

We confirm that the above mentioned application has not been submitted to any other EC member state nor has any other member state granted a corresponding approval.

Sincerely




Mr. Wang Ping  
Zhejiang Dahao Automotive Co., Ltd.



Information folder No. : DF-TRS008-00

First application date : June 19, 2015

1. Specification data

Type		DF-TRS008		
Function		Rear group lamp		
		Rear direction indicator lamp	Stop lamp	Rear position lamp
Color		Amber	Red	Red
Rated	Voltage	12V/ 24V	12V/ 24V	12V/ 24V
	Wattage	1W	1W	2.2W
Application Regulation ECE		R6.01 Cat. 2a	R7.02 Cat. S1	R7.02 Cat. R1
Location of marking	Number and category of light source	6*LED	6*LED	17*LED
		Non-replaceable light source		
	Marked on housing			
	Trade mark			
		Marked on lens		
Approval mark	Marked on lens			

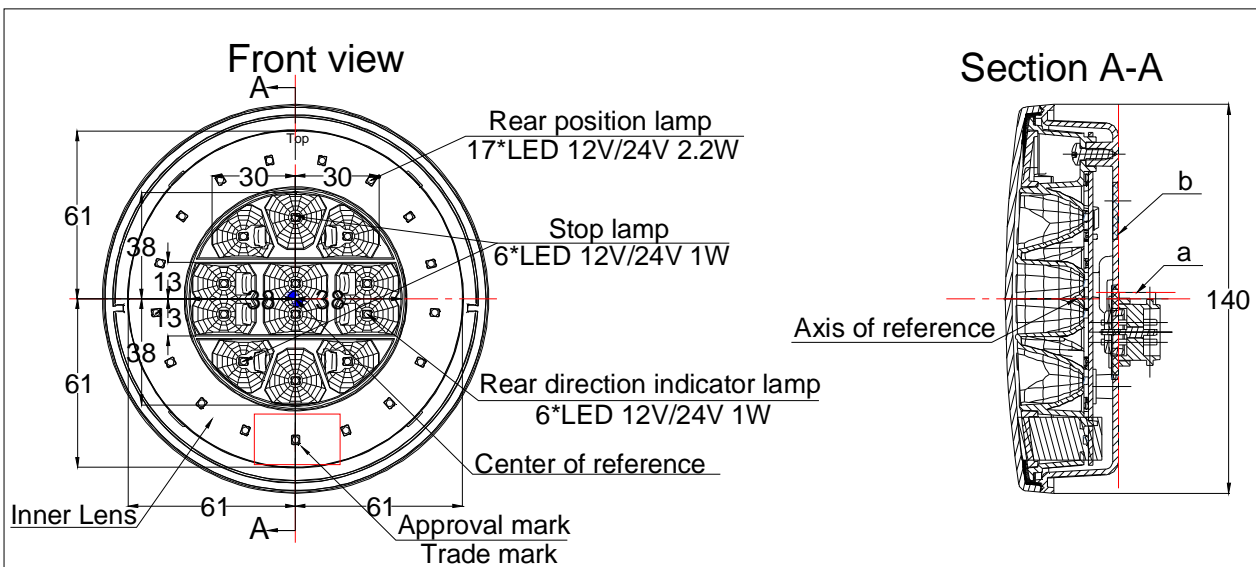
2. Construction and material

Construction	Material	Remarks
Outside Lens	PMMA	Rear direction indicator lamp: Clear Rear position lamp and Stop lamp: Clear
Inner Lens	PC	Rear position lamp: Red
Reflector	ABS	Painting on the inside surface Color: Metal silver
Housing	ABS	--
Electrical Wiring	Copper covered with insulation	--

3. Name and address of manufacturer : Zhejiang Dahao Automotive Co., Ltd.  
Xiaotian Village, Duqiao Town, Linhai City,  
Taizhou City, Zhejiang Province, P.R. China 317000

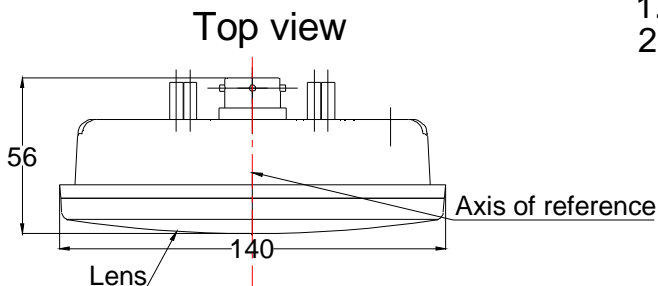
4. Name and address of the manufacturer's representative : N/A





**NOTE:**

1. "a": Horizontal Plane of Vehicle
2. "b": Longitudinal Plane of Vehicle



Approval mark

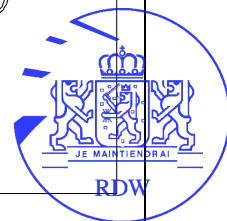
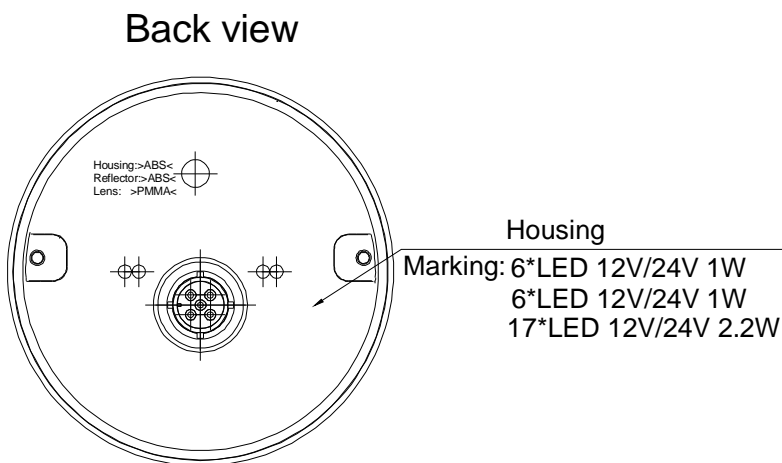
R1 S1 2a a/3

02 02 01 a/3

a a/2 E4 a/3

24274 a/3

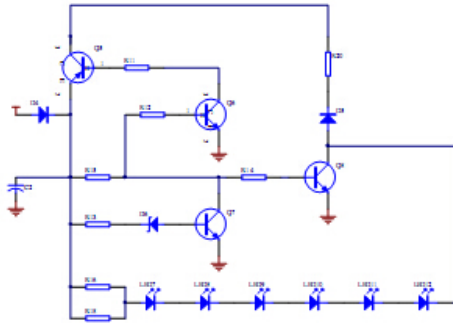
a=5mm min



Product Type	DF-TRS008
General assembly drawing	
Drawing No.	DF-TRS008-01

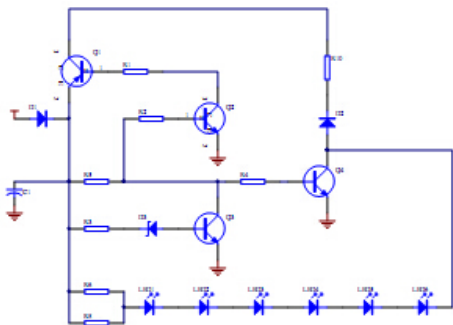
Rear direction indicator lamp

6\*LED 12/24V 1W



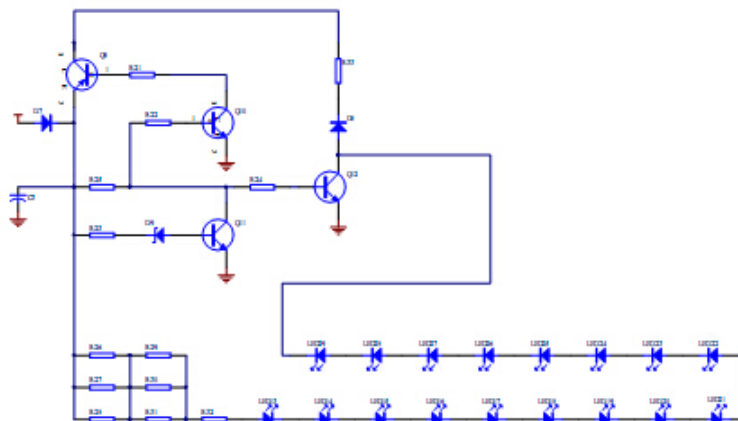
Stop lamp

6\*LED 12/24V 1W



Rear position lamp

17\*LED 12/24V 2.2W



Product Type	DF-TRS008
Led circuit diagram	
Drawing No.	DF-TRS008-02