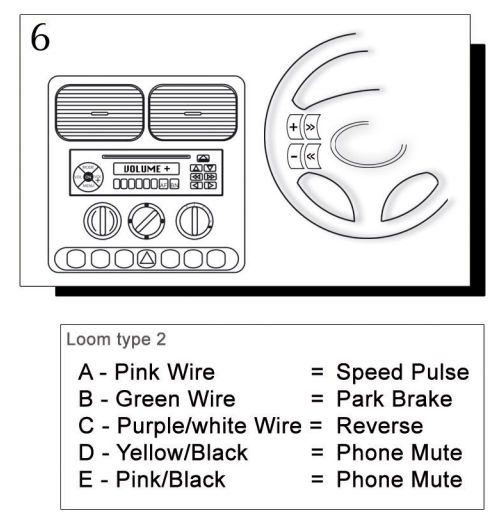
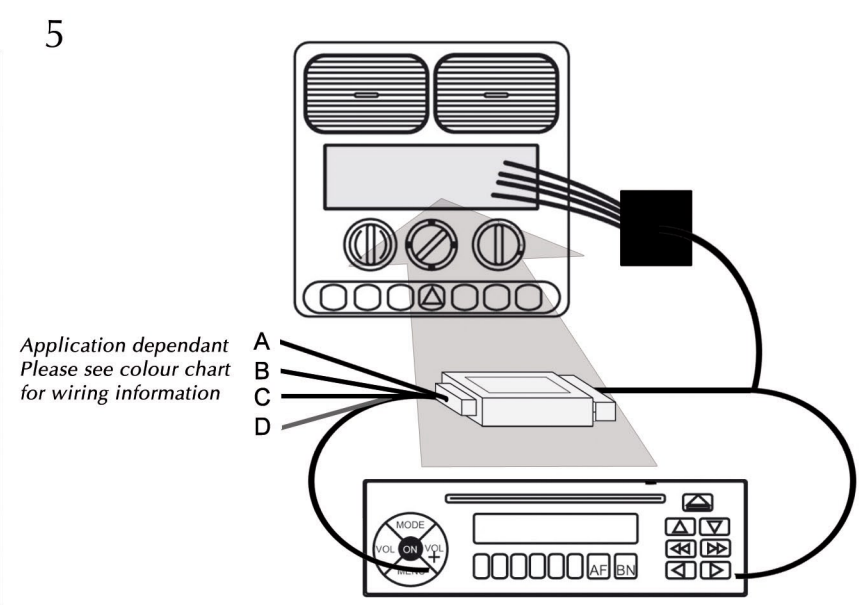
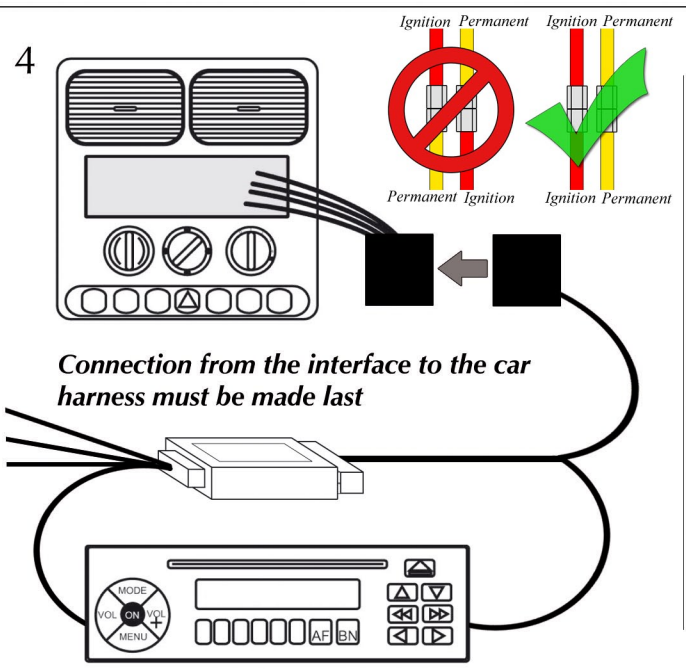
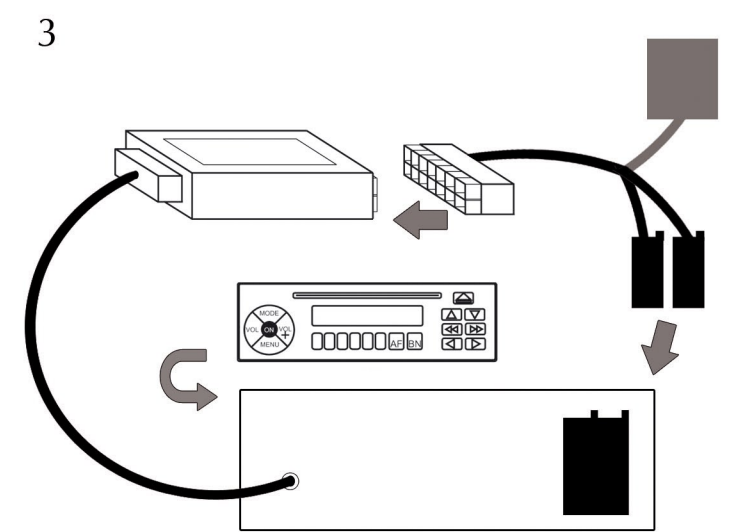
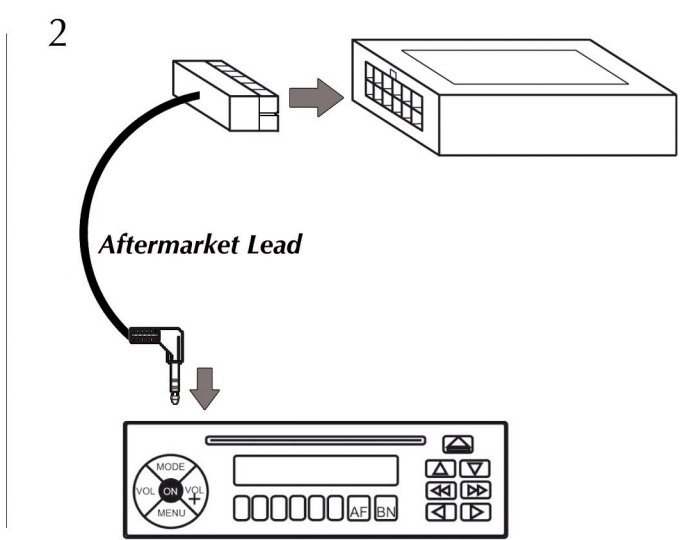
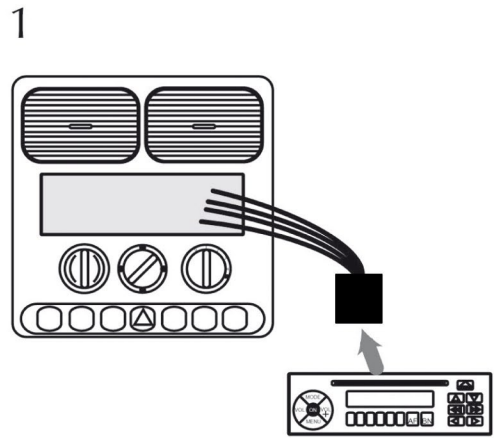


# Installation Guide

## Steering wheel control Interface



# User Guide

## Steering wheel control Interface

CTSMZ001 - Mazda 6 with Bose  
CTSMZ003 - Mazda 6 non amplified



### To Adjust Clock:

1. Press and hold SET button for 2 seconds.
2. Press up to increment the hour.
3. Press down to increment the minute.
4. Press and hold SET button to exit or wait for 10 seconds.

### To Navigate Trip Computer:

1. Press the RIGHT arrow repeatedly until the clock in the vehicle display is highlighted.
2. Use the UP and DOWN keys to navigate the trip computer.

### To Reset Trip Computer

1. Navigate to trip computer setting you wish to reset (as shown above)
2. Press and hold 'SET' until the reading clears. The display should show ' --- '

\*BLUE MALE BULLET CONNECTOR ON INTERFACE SHOULD BE CONNECTED TO AMP REMOTE ON AFTERMARKET STEREO (BOSE AMP ON SIGNAL)